



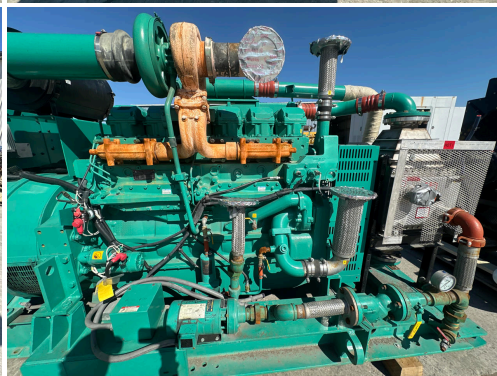
_750 KW CUMMINS/ONAN GEN SET, QSK23 CUMMINS ENGINE, YEAR - 2012, 169 HOURS, US EPA TIER 2 PRE EMISSION

\$95,000.00

SKU: IE750-129-CU

Categories: [700 KW](#), [Generator](#)

GALLERY



PRODUCT DESCRIPTION

Stock # IE 750-129-CU
Inventory Sheet

Machine	Price \$	95,000
Description	750 kW Cummins/Onan Gen Set, QSK23 Cummins Engine, Year - 2012, 169 Hours, US EPA Tier 2 Pre Emission	
Make	Cummins	
Model #	DQCB-1212896	
Serial #	J120401819	
Kilo Watts	750 kW	
Year Built	2012	
Hours	169	Hours
Phase 1 / 3	Skid Mounted	
Reconnectable	12 Lead	Base Fuel Tank
Length	175	"
Width	61	"
Height	80	"
	Plus 5 Ft. x 5 Ft. for Remote Radiator	
Weight	13000	Lbs *Including Radiator
Voltage	277/480	Volts Reconnectable
Condition	Well Maint. Unit, Tested, Serviced, Ready to go	
Hertz	60 Hz	
Circuit Br.	Yes	
Engine		
Description	750 kW Cummins/Onan Gen Set, QSK23 Cummins Engine, Year - 2012, 169 Hours, US EPA Tier 2 Pre Emission	
Make	Cummins	
Model #	QSK23-G7 NR2	
Serial #	00325104	
CPL/Arr #	2621	
Horsepower	1220	HP @ 1800 RPM
Fuel	Diesel	
Battery	Not Included	

ADDITIONAL INFORMATION

Weight 13000 lbs

Dimensions	175 × 61 × 80 in
Fuel Type	Diesel
KW Capacity	700KW
Manufacturer	Cummins