



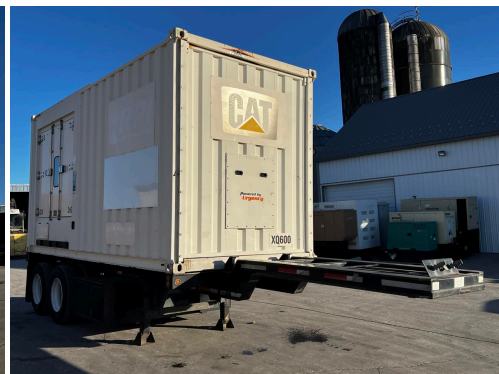
**_ 600 KW XQ600 CATERPILLAR
GENSET, PORTABLE RENTAL
GRADE GENSET WITH PARALELL
SWITCH GEAR, US EPA TIER 2
PRE EMISSIONS, YEAR - 2011**

\$199,000.00

SKU: IE600-141-CT

Categories: [600 KW](#), [Generator](#)

GALLERY



PRODUCT DESCRIPTION

Stock # IE 600-141-CT

Inventory Sheet

Machine	Price \$	199000	
Description	600 kW XQ600 Caterpillar Genset, Portable Rental Grade Genset with Paralell Switch Gear, US EPA Tier 2 Pre Emissions, Year - 2011		
Make	Caterpillar		
Model #	XQ600		
Serial #	CAT0000KG4C04870		
Kilo Watts	600 kW		
Year Built	2011		
Hours	2	Hours	since major Rebuild Engine & Gen End
Phase 1 / 3	Trailer Mounted		
Reconnectable	12 Lead	Base Fuel Tank	
Enclosed	Sound Attenuated	Voltage Selector Board	
Length	350	"	
Width	96	"	
Height	157	"	
Weight	30000	Lbs.	
Voltage	277/480	Volts	Selectable
Condition	Well Maint. Unit, Tested, Serviced, Ready to go		
Hertz	60 Hz		
Circuit Br.	Yes		
Engine			
Description	600 kW XQ600 Caterpillar Genset, Portable Rental Grade Genset with Paralell Switch Gear, US EPA Tier 2 Pre Emissions, Year - 2011		
Make	CAT		
Model #	C18		
Serial #	X6W00236		
CPL/Arr #	296-5973		
Fuel	Diesel		
Battery	Not Included		

ADDITIONAL INFORMATION

Weight 30000 lbs

Dimensions	350 × 96 × 157 in
Fuel Type	Diesel
KW Capacity	600KW
Manufacturer	Caterpillar