



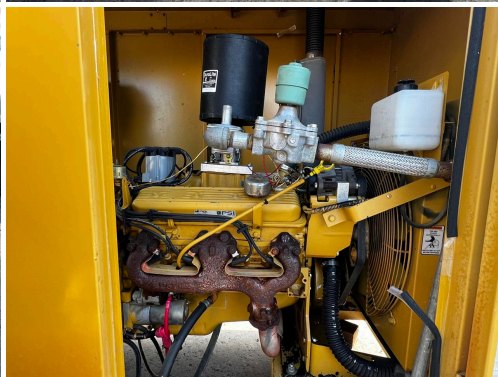
**60 KW KATOLIGHT
GENERATOR, GM 5.7L PSI
ENGINE, NATURAL GAS OR
PROPANE, ENCLOSED, 453
HOURS**

\$9,750.00

SKU: IE60-275-KT

Categories: [60 KW](#), [Generator](#)

GALLERY



PRODUCT DESCRIPTION

Stock # IE 60-275-KT

Inventory Sheet

Machine	Price \$	9,750
Description	60 kW Katolight Generator, GM 5.7L PSI Engine, Natural Gas or Propane, Enclosed, 453 Hours	
Make	Katolight	
Model #	L60EDG4	
Serial #	LM378962	
Kilo Watts	60 kW	
Year Built	1997	
Hours	453	Hours
Phase 1	Skid Mounted	
Enclosed	4 Lead	
Length	90	"
Width	40	"
Height	80	"
Weight	3000	Lbs.
Voltage	120/240	Volts
Condition	Well Maint. Unit, Tested, Serviced, Ready to go	
Hertz	60 Hz	
Circuit Br.	Yes	
Engine		
Description	60 kW Katolight Generator, GM 5.7L PSI Engine, Natural Gas or Propane, Enclosed, 453 Hours	
Make	PSI	
Model #	GM-5.7L	
Serial #	5.7L-7046	
Fuel	Natural Gas or Propane	
Battery	Not Included	

ADDITIONAL INFORMATION

Weight	3000 lbs
Dimensions	90 × 40 × 80 in
Fuel Type	Natural Gas/Propane
KW Capacity	60KW

Manufacturer Katolight