



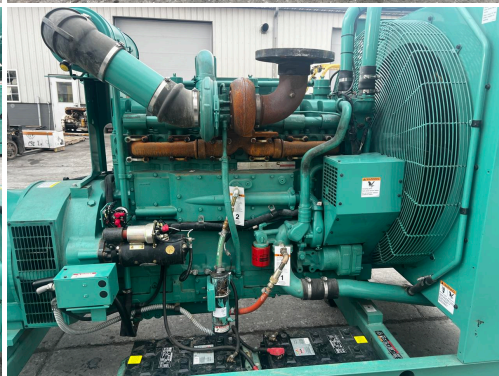
**_450 KW CUMMINS/ONAN
GENSET, OPEN SKID, KTA19 G3
ENGINE, YEAR - 2003, 579
HOURS**

\$42,500.00

SKU: IE450-163-CU

Categories: [400 KW](#), [Generator](#)

GALLERY



PRODUCT DESCRIPTION

Stock # IE 450-163-CU
Inventory Sheet

Machine	Price \$	42,500
Description	450 kW Cummins/Onan Genset, Open Skid, KTA19 G3 Engine, Year - 2003, 579 Hours	
Make	Cummins/Onan	
Model #	DFEC-5600898	
Serial #	C030480755	
Kilo Watts	450 kW	
Year Built	2003	
Hours	579	Hours
Phase 1 / 3	Skid Mounted	
Reconnectable	12 Lead	Base Fuel Tank
Length	156	"
Width	60	"
Height	78	"
Weight	10000	Lbs.
Voltage	277/480	Volts
Condition	Well Maint. Unit, Tested, Serviced, Ready to go	
Hertz	60 Hz	
Circuit Br.	Yes	
Engine		
Description	450 kW Cummins/Onan Genset, Open Skid, KTA19 G3 Engine, Year - 2003, 579 Hours	
Make	Cummins	
Model #	KTA19-G3	
Serial #	62057	
CPL/Arr #	1455	
Fuel	Diesel	
Battery	Not Included	

ADDITIONAL INFORMATION

Weight	10000 lbs
Dimensions	156 x 60 x 78 in

Fuel Type	Diesel
KW Capacity	400KW
Manufacturer	Cummins