



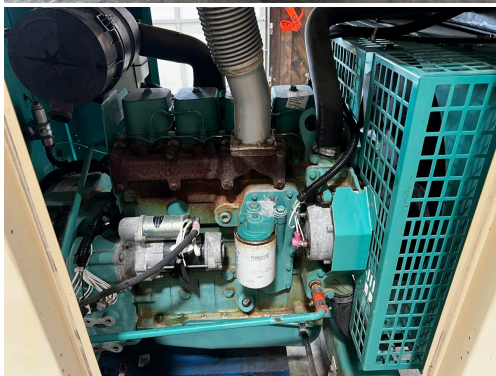
**_35 KW CUMMINS/ONAN
GENSET - 4B3.9 ENGINE,
ENCLOSED, YEAR - 2007, 596
HOURS**

\$8,750.00

SKU: IE35-262-CU

Categories: [30 KW](#), [Generator](#)

GALLERY



PRODUCT DESCRIPTION

Stock # IE 35-262-CU

Inventory Sheet

Machine	Price \$	8,750
Description	35 kW Cummins/Onan Genset - 4B3.9 Engine, Enclosed, Year - 2007, 596 Hours	
Make	Cummins	
Model #	35DGBB-6556	
Serial #	B070019384	
Kilo Watts	35 kW	
Year Built	2007	
Hours	596	Hours
Phase 1 / 3	Skid Mounted	
Reconnectable	12 Lead	20 Gal. Base Fuel Tank
Enclosed		
Length	84	"
Width	40	"
Height	75	"
Weight	3000	Lbs.
Voltage	120/208	Volts Reconnectable
Condition	Well Maint. Unit, Tested, Serviced, Ready to go	
Hertz	60 Hz	
Circuit Br.	Yes	
Engine		
Description	35 kW Cummins/Onan Genset - 4B3.9 Engine, Enclosed, Year - 2007, 596 Hours	
Make	Cummins	
Model #	4B3.9-G2	
Serial #	21733955	
CPL/Arr #	1522	
Horsepower	60	HP @ 1800 RPM
Fuel	Diesel	
Battery	Not Included	

ADDITIONAL INFORMATION

Weight	3000 lbs
Dimensions	84 x 40 x 75 in

Fuel Type	Diesel
KW Capacity	30KW
Manufacturer	Onan