



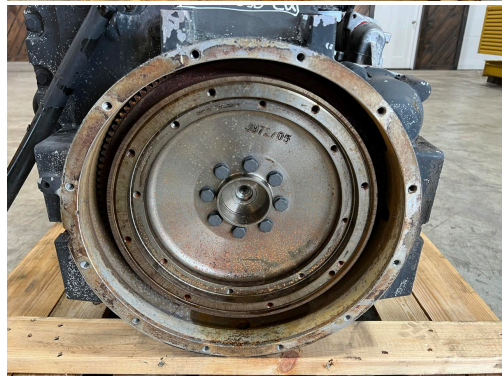
**QSB6.7 CUMMINGS INDUSTRIAL
ENGINE, 170 HP, YEAR - 2008,
US EPA TIER 3**

\$9,500.00

SKU: IEEN-650-CU

Categories: [Engines](#) / [Power Units](#)

GALLERY



PRODUCT DESCRIPTION

Stock # IEEN-
Inventory Sheet

650-CU

Engine/Pwr Unit	Price	\$ 9,500
Description	QSB6.7 Cummings Industrial Engine, 170 HP, Year - 2008, US EPA Tier 3	
Make	Cummins	
Model #	QSB6.7	
Serial #	21896642	
Horsepower	170 HP @ 2000 RPM	
CPL/Arr. #	426	
Year Built	2008	
Hours	4500	
Dimensions -Length	47	"
Width	39	"
Height	40	"
Weight	1700	lbs.
Condition	Good Used, Tested	
Bell Housing	SAE 2	
Flywheel	11 1/2	

ADDITIONAL INFORMATION

Weight	1700 lbs
Dimensions	47 × 39 × 40 in
Manufacturer	Cummins