

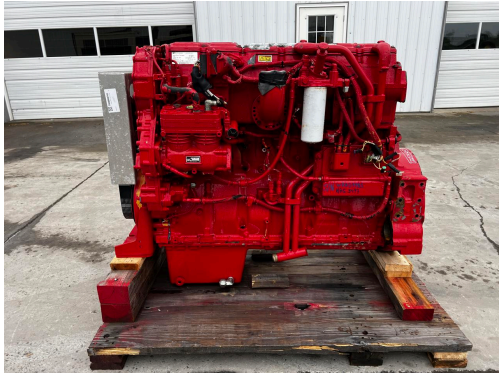
**C18 CAT DIESEL ENGINE
INDUSTRIAL, 800 HP @ 2100
RPM, 3497 HOURS, US EPA TIER
3, NON EMISSIONS, EXCHANGED
WITH GOOD CORE**

\$75,000.00

SKU: IEEN-688-CT

Categories: [Engines / Power Units](#)

GALLERY



PRODUCT DESCRIPTION

Stock # IEEN-

688-CT

| | | |
|--------------------|---|-----------|
| Inventory Sheet | | |
| Engine/Pwr Unit | Price | \$ 75,000 |
| Description | C18 CAT Diesel Engine Industrial, 800 HP @ 2100 RPM, 3497 Hours, US EPA Tier 3, Non Emissions, Exchanged with Good Core | |
| Make | CAT | |
| Model # | C18 | |
| Serial # | WRH04485 | |
| Horsepower | 800 HP | |
| CPL/Arr. # | 359-1886 | |
| Year Built | 2013 | |
| Hours | 3497 | |
| Dimensions -Length | 65 | " |
| Width | 48 | " |
| Height | 49 | " |
| Weight | 5000 | lbs. |
| Condition | Good Used | |
| Bell Housing | SAE 1 | |
| Flywheel | To Fit CAT Trans | |

ADDITIONAL INFORMATION

| | |
|---------------------|-----------------|
| Weight | 5000 lbs |
| Dimensions | 65 × 48 × 49 in |
| Manufacturer | CAT |